

*PRODUCT BROCHURE*

**DELBAG® Air Filtration  
Overview of All Product Lines**

## ***Air Filtration and Air Pollution Control***



## Custom-made and efficient air treatment

---



Whether restaurant kitchen, shopping center, hotel lobby, industrial hall or operating room: There is always an air filter that meets the unique requirements of the respective area of application. The current DELBAG® program covers more than 2,000 different standard and special filters, which provide clean air in commercial, industrial and residential areas. Finest emulsion mists, toxic vapors, fine dusts and material chips are filtered just as reliably as odors, bacteria, fungus pores or viruses.

In addition, air filters support an economic process control. Consumption costs for electricity, heat and water are lowered noticeably and statutory provisions are certainly fulfilled.

The product range overview on the following pages introduces you to a series of filter systems which are just as innovative as they are tried and tested. These include electrostatic filters, duct air filter, dust extraction units and plants as well as intake air filter systems. The range is rounded off with a variety of suitable filtering media, filter system controls and accessories.



As planners you benefit from the maximum flexibility. No matter which user profile an area or a process has to fulfill, or how high the requirements even for extract air: due to the variety of possible variations, you can find a tailored solution for each project. We draw on the vast range of process engineering possibilities of air filtration.

# Commercial – Industrial – Residential applications



FILTER MATS, ROLLS, SECTIONS, PADS

## Filter Classes G2 – M5

**Application:** Filtration of coarse fine dust particles

**Nominal air volume flow rate:**  
up to 10,000 m<sup>3</sup>/m<sup>2</sup>h

**Series:** CTM, VENUFA, MYSTOP, FIBROIDELASTOV, PERFECT, ACELAN, BAUREIHE 1000, FIBROBAND and 412 roll-band filter, LoTex® particularly for oleo- and hydrophobic filtration, FireTex® fire retardant.

### Product details

Filter material elastic, without wetting agent and regenerable, usually made from polyester fibers or glass fiber. Installation depth: 5 - 100 mm



BAG FILTER

## Filter classes G3 - F9

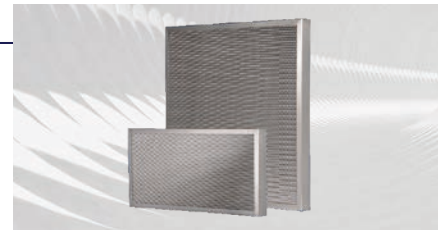
**Application:** Filtration of coarse fine dust particles

**Nominal air volume flow rate:**  
3,400 - 4,250 m<sup>3</sup>/h per cell 592 x 592 mm.

**Series:** MULTISACK and SERIES 4000 FireTex® fire retardant.

### Product details

Wedge-shaped filter bags with spreader bar. Alternatively made from synthetic fiber fleece or micro glass-fiber fleece, front frame alternatively made from plastic or galvanized steel  
**Installation depth:** 150 - 650 mm.



METAL FILTERS

## Filter Classes G2 – M5

**Application:** Filtration of coarse fine dust and aerosol particles

**Nominal air volume flow rate:**  
up to 10,000 m<sup>3</sup>/m<sup>2</sup>h

**Series:** GAL, HL 12.5, ST 8 and SERIES 2000

### Product details

Filter plates and cells, filter material regenerable, made from several layers of aluminum, stainless steel, polyester fabric and/or mixed fabric or expanded metal.  
**Installation depth:** 8-82 mm.



FILTER CELLS

## Filter classes G4 - F9

**Application:** Filtration of coarse fine dust and aerosol particles

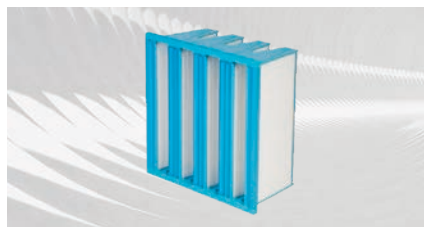
**Nominal air volume flow rate:**  
up to 10,000 m<sup>3</sup>/m<sup>2</sup>h

**Series:** AeroPlus and SERIES 3000 Z-cells, FILTERGLAS, FIBERGLAS, UL-TRANGLAS, ULTRANGLAS-H (up to 300°C)

### Product details

Pleated glass or synthetic fibre fleece in the fiber board, synthetic or metal frame. In case of glass cells, glass fibre mat held within the frame

**Installation depth:** 14-150 mm.



FILTER ELEMENTS

## Filter classes M6- E12

**Application:** Filtration of fine or finest dust and aerosol particles

**Nominal air volume flow rate:**  
1,500 - 5,100 m<sup>3</sup>/h per cell 592 x 592 mm.

**Series:** MULTIFORM, MULTIPLAN, SERIES 8000 (AeroPlus and MultiPlus), Multi 2004 and MultiPack filter-exchange technology, MULTICOL, MULTITHERM (up to 250 °C)

### Product details

Synthetic or Micro glass-fibre fleece in Mini-Pleat design or separator construction. Frame made from plastic or metal depending on series. Designs with and without burst protection.

**Installation depth:** 40-400 mm.



HEPA/ULPA FILTER

## Filter classes: E11 – U15

**Application:** Filtration of suspended solid particles

**Nominal air volume flow rate:**  
600 - 4,000 m<sup>3</sup>/h

**Series:** MICROPUR, MACROPUR, ABSOPUR, ULTRAPUR and SERIES 6000

### Product details

Table filter elements made from micro glass-fiber fleece in Mini-Pleat or separator design. FV design with package of folds arranged in V shape Frame material selectable in wood or metal

**Installation depth:** 30-292 mm.

## Commercial – Industrial – Residential applications



ACTIVATED CARBON FILTER

### Gas filtration

**Application:** Filtration of gaseous contaminations and odors

**Nominal air volume flow rate:**  
10 - 300 m³/h per cartridge

**Series:** 705-709  
available with different AKOLIT activated carbon types  
Type AKOLIT available  
Alternatively even filter plates, filter elements or packed bed filters available.

### Product details

Activated carbon filter cartridges in concentric plastic or metallic cylinders, with bayonet, plug-type or screw-type closures  
**Installation depth** (length):  
291, 450, 600 mm



ROUND AIR FILTERS

### Filter Classes G2 – M5

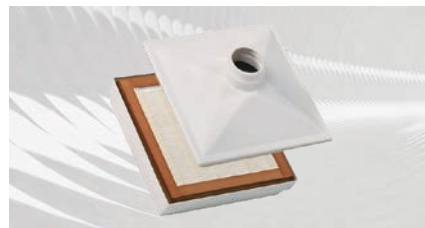
**Application:** Filtration of coarse and fine dust particles

**Nominal air volume flow rate:**  
220 - 7,000 m³/h per filter

**Series:** DAH, DBH, DBA, DBV, DAC and DBC  
Diameter 130 - 500 mm  
Intake air cleaning for IC engines or fans.

### Product details

Filter cartridges in different sizes and with different filtering media. Filtering media replaceable or reusable after cleaning and, if necessary, wetting.  
**Installation depth** (height): 120 - 705 mm



COPULAR HEPA FILTER

### Filter class

H13

**Application:** Filtration of suspended solid particles

**Nominal air volume flow rate:**  
50 and 220 m³/h

**Series:** CKL  
Sizes 240x240 and 490x490 mm

### Product details

Copular filter with one or two connection sockets. The HEPA filter element is not replaceable.

**Installation depth:** 140, 228 and 192, 330 mm.



GLOVE BOX FILTERS

### Filter class F9 - U15 / activated carbon

**Application:** Filtration of suspended solid particles and gaseous materials

**Nominal air volume flow rate:**  
25 m³/h per filter

**Series:** DKA, DKB, DKC, DKD  
Diameter 140 mm

### Product details

HEPA filters in totally enclosed design, also available with activated carbon insert.

**Installation depth:** 172, 194, 257, 279 mm.



WALL FRAME

**Application:** For mounting air filters

**Materials:** galvanized or painted sheet steel or stainless steel

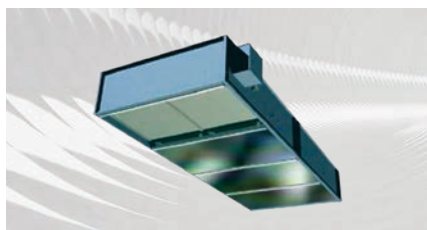
**Series:** CDD, CKC, MPW, CKG, CFC, MCB  
CDD for bag filters and filter elements  
CKC/MPW for HEPA filter  
CKG for activated carbon cartridges  
CFC/MCB for filter mats and panel filter cells

### Product details

Filter frames also suitable for modular configuration of filter walls.

**Model sizes:** 305/305 - 610/610 mm

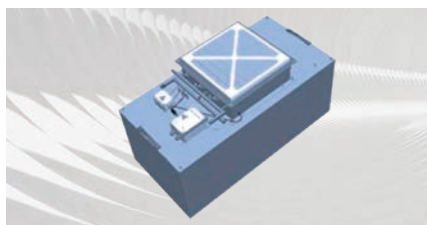
# Ventilation components



LAMINAR AIR-FLOW UNIT

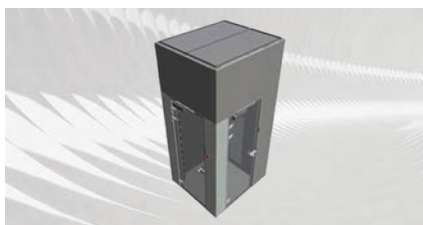
FRESH HEAVEN MAXX	Industry	Operating room
<b>Air velocity</b>	0.15 - 0.45 m/s	0.18 - 0.38 m/s
<b>Dimensions</b>	upon request	3.2 x 3.2 m
<b>Base</b>	No	Yes – for OR lighting
<b>Operating mode / air intake</b>	Circulating air mode via built-in fans or without own fans. Air intake via air-handling unit	Without separate fans. Air intake via external air-handling unit.
<b>Material</b>	Stainless steel AISI 304	Galvanized sheet steel, painted with RAL 9010
<b>Filter seal</b>	U-section	Gel
<b>Diffusors</b>	Perforated sheet steel	1- or 2-layer EPS tissue in the aluminum frame. (two-layer = differential air flow)

Complete filtration – horizontally installed HEPA/ULPA filter H13/H14/U15)  
Optional: chilled water-heat exchanger (in Power version)



FAN-FILTER UNIT

FRESH BREEZE
<b>Dimensions:</b> 600x1200 mm or 1200x1200 mm
<b>Nominal air flow rate:</b> 1200- 2400 m³/h
<b>Motor:</b> EC
<b>Accessories:</b> curtain made of PV strips, lighting
<b>Optional:</b> Pre-filter and/or chilled water-heat exchanger



PERSONNEL AIR LOCK

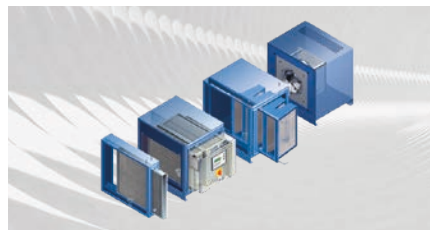
AIR SHOWER
Compressed-air shower with pure air
Application area in sanitary locks for cleaning the clean room personnel, in order to prevent contaminations
For one person



CEILING OUTLET HEPA FILTER

CGF
<b>Application:</b> Filtration of suspended solid particles
<b>Nominal air flow rate:</b> 260 - 1400 m³/h
<b>Filter classes:</b> F7 - U15
Various filter seals
Various outlets for turbulent air flow
Optional: manually operated or automatic air shutoff flap
<b>Likewise available:</b> CGO – for air extraction

## Commercial and Industrial Applications



COMPACT ELECTROSTATIC PRECIPITATOR

**Application:** Filtration of cooling lubricants, particularly oil mist, smokes, and oxides

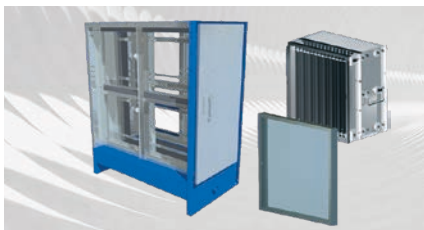
**Nominal air volume flow rate:**  
500 - 8,500 m<sup>3</sup>/h

**Series:** MultiTron Premium  
Extract air Process air  
Decentral

### Product details

- Modular construction
- Minimal power costs due to lowest pressure drops
- Recirculating-air mode possible
- Regenerable filter elements
- Fans
- Standard accessories

**Use:** Metalworking industry



ELECTROSTATIC FILTER DRAW-OUT UNIT

**Application:** Filtration of cooling lubricants, particularly oil mist, hall exhaust

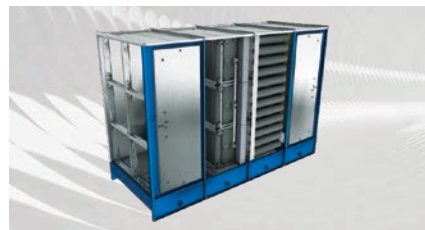
**Nominal air volume flow rate:**  
10,000 - 40,000 m<sup>3</sup>/h

**Series:** MultiMaster-Vario, Ek  
Extract air Process air  
Central Decentral

### Product details

- Lateral insertion resulting in shorter over-all length
- Low power costs due to lowest pressure drops
- Recirculating-air mode possible
- Regenerable filters

**Use:** Industrial, climate control, ventilation



ELECTROSTATIC PRECIPITATOR

**Application:** Filtration of cooling lubricants, particularly oil mist, hall exhaust

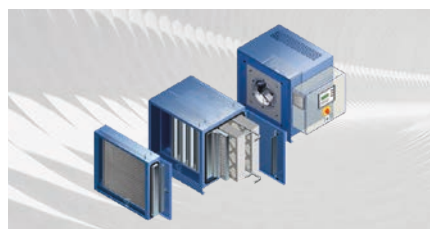
**Nominal air volume flow rate:**  
10,000 - 200,000 m<sup>3</sup>/h

**Series:** MultiMaster-Vario, E  
Extract air Process air  
Central

### Product details

- Modular construction
- Low power costs due to lowest pressure drops
- Recirculating-air mode possible
- Regenerable filter elements

**Use:** Industrial, climate control, ventilation



COMPACT AEROSOL FILTER

### Filter classes F7 - H13

**Application:** Filtration of emulsion mists and solid aerosols

**Nominal air volume flow rate:**  
500 - 6,800 m<sup>3</sup>/h

**Series:** MultiAir Premium  
Extract air Process air  
Decentral

### Product details

- Modular construction
- Extensive range of pre and main filters
- Vast range of efficient fans
- Circulating-air mode possible

**Use:** Metalworking industry



DUCT MIST FILTERS

### Filter classes G3 - F9

**Application:** Filtration of emulsion and oil mists and fine particles

**Nominal air volume flow rate:**  
3,000 - 61,000 m<sup>3</sup>/h

**Series:** KNA  
Extract air Process air  
Central Decentral

### Product details

- Compact construction
- Regenerable design
- Maintenance-free
- Vast range of different pre- and main filters

**Use:** Metalworking industry



DUCT AEROSOL FILTERS

### Filter classes G3 - F9

**Application:** Filtration of dry and liquid aerosols

**Nominal air volume flow rate:**  
20,000 - 400,000 m<sup>3</sup>/h

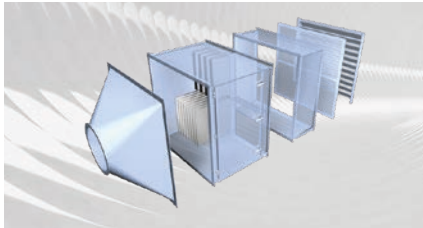
**Series:** MultiMaster-Vario, MCB  
Supply air Extract air Process air  
Central

### Product details

- High volume flow rates at small cross section
- Multi-stage filter arrangement possible
- Modular construction
- Standard accessories

**Use:** Industrial, intake filter for gas turbines, compressors and motors

## Commercial and Industrial Applications



DUCT AIR FILTERS

**Filter classes G3 - F9 / activated carbon**

**Application:** Filtration of coarse and fine dusts and odors

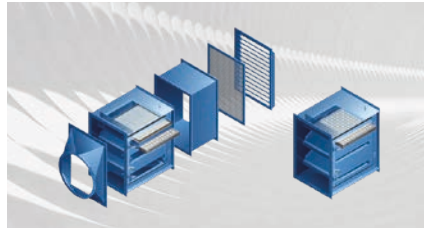
**Nominal air volume flow rate:**  
2,000 - 41,000 m³/h

**Series:** MultiMaster  
Supply air    Extract air    Process air  
Central      Decentral

### Product details

- Extensive standard accessories • Available as kit • Standard-series measurement points for differential pressure measurement

**Use:** Climate control, ventilation, industrial



UNIVERSAL DUCT AIR FILTER

**Filter classes G3 - H13**

**Application:** Filtration of coarse, fine and suspended particulate matter or oil and emulsion mists

**Nominal air volume flow rate:**  
1,000 - 49,000 m³/h

**Series:** MultiClean  
Supply air    Extract air    Process air  
Central      Decentral

### Product details

- Use of up to 4 different filter stages possible • Reinforced and pulse-jet resistant design • Normal steel, stainless steel

**Use:** Industrial, pharmaceutical and chemical industry



SAFETY FILTER

**Filter classes M5 - U15 / carbon**

**Application:** Filtration of viruses, bacteria, radioactive and toxic materials

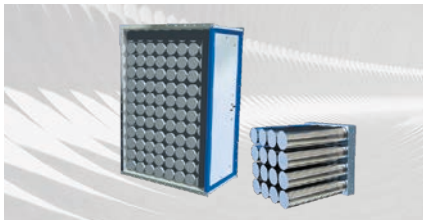
**Nominal air volume flow rate:**  
1,000 - 32,000 m³/h

**Series:** MultiSafe  
Supply air    Extract air    Process air  
Central      Decentral

### Product details

- Contamination-free filter replacement • Maintenance-free clamping device • Filter seat testing possible during operation • Extensive standard accessories

**Use:** Pharmaceutical, chemical, nuclear, health care industry, laboratories



ACTIVATED CARBON FILTER

**Use:** Filtration of odors and gaseous pollutants

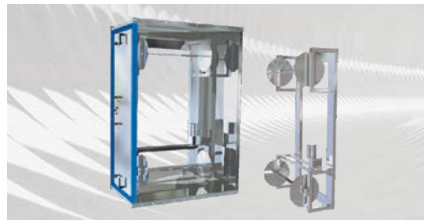
**Nominal air volume flow rate:**  
12,000 - 144,000 m³/h

**Series:** MultiMaster-Vario, CKG  
Supply air    Extract air    Process air  
Central

### Product details

- Vast range of application-specific activated carbon variety • Filter cartridge housing made from galvanized steel, stainless steel or plastic

**Use:** Climate control, ventilation, industrial



ROLL-BAND FILTER

**Filter class G3**

**Application:** Filtration of coarse particles

**Nominal air volume flow rate:**  
10,000 - 150,000 m³/h

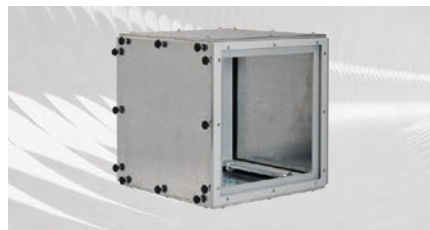
**Series:** MultiMaster-Vario, GDB  
Supply air    Process air  
Central

### Product details

- Automatic, differential pressure-controlled further transportation of the filtering medium • Maintenance-free • Adjustable band guide

**Use:** Ventilation, industrial, intake filter for gas turbines, compressors and motors

## Commercial and Industrial Applications



MODULAR DUCT AIR FILTER

**Filter classes G2 -H13 / carbon**

**Application:** Filtration of coarse and fine dusts and odors

**Nominal air volume flow rate:**  
1,200 - 4,250 m³/h per module  
610/610 mm

**Series:** EBE

Supply air    Extract air  
Central       Decentral

### Product details

- Housing made from galvanized steel sheet or stainless steel
- With measuring points for differential pressure measurement
- Individual modules can be combined into systems

**Use:** Climate control, ventilation, industrial



MODULAR FRAME SYSTEM

**Filter classes G3 - F8**

**Application:** Filtration of coarse dusts / spark separator

**Nominal air volume flow rate:**  
500 - 200,00 m³/h

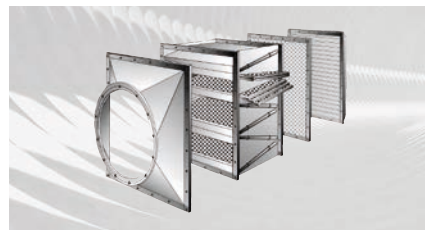
**Series:** CFC

Supply air and extract air  
Process air

### Product details

- Suitable for wall installation and in HVAC systems
- Special versions for pulsating air flows
- For temperatures up to 300 °C
- Extremely robust and long-lived
- Various filter media

**Use:** Supply-air and recirculated-air systems in the automotive industry, inlet air in waterworks



DUCT AIR FILTERS

**Filter Classes G3 – M5**

**Application:** Filtration of coarse dusts

**Nominal air volume flow rate:**  
1,000 - 30,000 m³/h

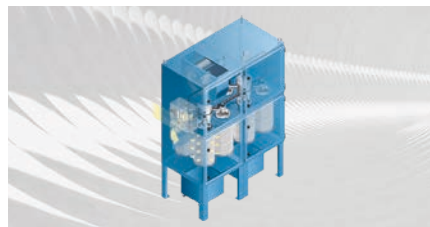
**Series:** EC

Supply air and extract air  
Process air

### Product details

- Horizontal or vertical installation possible
- High air-flow rate due to V-shaped filter arrangement
- Quicker filter replacement due to easily removable cover panels
- Extensive accessories available
- Extremely robust and long-lived

**Use:** Metalworking industry, Inlet air CO2 trickling in waterworks



CARTRIDGE DUST FILTERS

**Filter categories (L, M)**

**Application:** Filtration of dry dust and smoke

**Nominal air volume flow rate:**  
2,000 - 24,000 m³/h

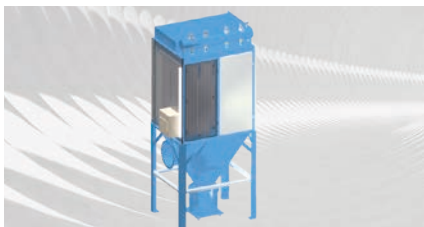
**Series:** EuroJet

Supply air    Process air  
Central       Decentral  
Filter-exchange system for filter cartridges

### Product details

- Filter-exchange system of the filter cartridges
- Modular configuration
- Different filtering media
- State-of-the-art controls
- Fans, accessories

**Use:** Metalworking industry



CARTRIDGE DUST FILTERS

**Filter categories (L, M)**

**Application:** Filtration of dry dusts, for coarse to sub-micron particles

**Nominal air volume flow rate:**  
2,000 - 50,000 m³/h

**Series:** MultiJet

Extract air    Process air  
Central       Decentral  
Compact hose cartridges

### Product details

- Reinforced and shock-proof design
- Modular configuration
- Various filter media
- State-of-the-art controls
- Fans
- Accessories

**Use:** Industrial, pharmaceutical and chemical industry



SPARE MATERIAL DRY EXTRACTION

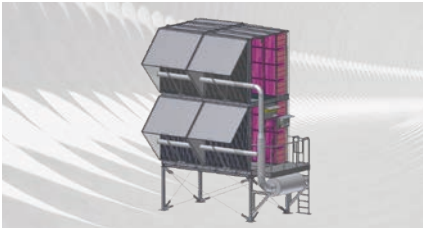
**Filter categories (L, M)**

Filter cartridges  
Filter hoses  
Flat bag filters  
Hose cartridge filters  
Deicolon candle filters  
Compact filter elements  
all designs alternatively for horizontal and vertical installation

### Product details

DELBAG® offers the entire range of the commonly commercially available filter media, materials and designs. In addition, antistatic, hydrophobic, temperature-resistant, flame retardant and other special media available for special applications.

## Commercial and Industrial Applications



STATIC FILTER SYSTEMS

### Filter classes G4 - H13

**Application:** Intake filter for moderate dust loading (e.g. Europe)

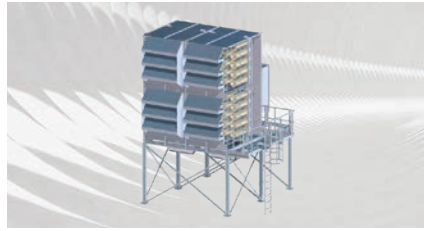
**Nominal air volume flow rate:**  
10,000 - 750,000 m<sup>3</sup>/h

**Series:** Static filters

#### Product details

- Custom-made system • Retrofit • Coalescer • Droplet separator • Anti-icing systems • Air conditioning • Noise control

**Use:** Energy and process industry



PULSE FILTER SYSTEMS

### Filter Classes M6 – F9

**Application:** Intake filter for high dust loading (e.g. desert region)

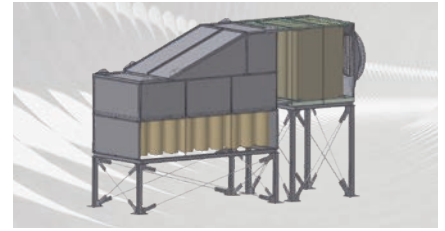
**Nominal air volume flow rate:**  
10,000 - 750,000 m<sup>3</sup>/h

**Series:** Pulse filter

#### Product details

- Use of up to 4 different filter stages possible • Reinforced and pulse-jet resistant design • Normal steel, coated or stainless steel

**Use:** Energy and process industry



DEEP BED FILTER CARTRIDGE SYSTEMS

### Filter classes F9 - E11

**Application:** Intake filter for moderate dust loading and max. filter performance

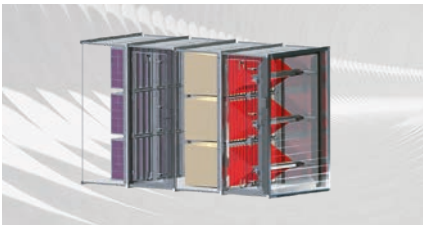
**Nominal air volume flow rate:**  
10,000 - 750,000 m<sup>3</sup>/h

**Series:** Deep bed filters

#### Product details

- Custom-made system • Retrofit • Horizontal or vertical cartridge arrangement • Pre-filter sock • Air conditioning • Noise control

**Use:** Energy and process industry



STANDARD FILTER SYSTEMS

### Filter classes G4 - H13

**Application:** Intake filter for moderate dust loadings (e.g. Europe)

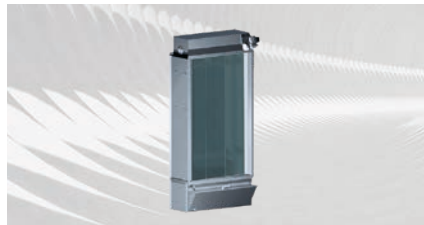
**Nominal air volume flow rate:**  
2,000 - 100,000 m<sup>3</sup>/h

**Series:** Multi-Master Vario

#### Product details

- Modular system with several variants • Coalescer • Droplet separator • Anti-icing systems • Air conditioning • Noise control

**Use:** Energy and process industry



STANDARD OIL BATH-ROTARY FILTER

### Filter classes G3 - G4

**Application:** Intake filter (coarse dust filtration) with wide range of application

**Nominal air volume flow rate:**  
2,000 - 100,000 m<sup>3</sup>/h

**Series:** RotaClean

#### Product details

- Modular system with several variants • Automatic operation • Maintenance-free • For difficult operating conditions • Noise control

**Use:** Energy and process industry



SPARE FILTER INTAKE AIR FILTRATION

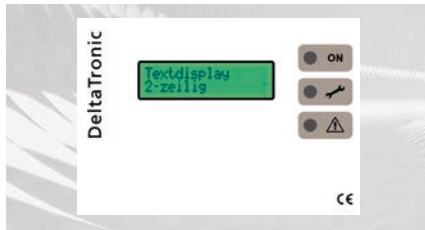
### Filter classes G2 - H13

- Coalescer filters
- Filter mats G2 - F5
- Filter band G3
- Filter cells G4-M5
- Bag filter, G4 – F9
- Filter elements M5-F9
- HEPA filter elements E11 - U15
- Pulse filter cartridges M6 - F9
- Deep bed filter cartridges F9 - E11

#### Product details

DELBAG® offers the entire range of the commonly commercially available filter media, materials and designs. In addition, antistatic, hydrophobic, temperature-resistant, flame retardant and other special media available for special applications.

## Commercial and Industrial Applications



**FILTER MONITOR**

**Application:** For differential pressure monitoring of mechanical filters

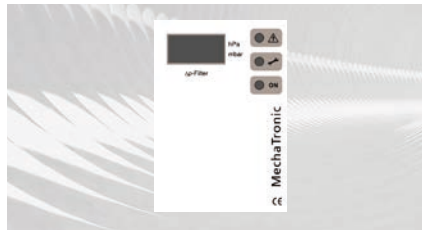
**Application:**  
Duct air filters, separators, intake filters

**Series:** DeltaTronic

Measuring range 0 – 5,000 Pa

### Product details

- Control LEDs for OPERATION/CSERVICE/ FAULT • Digital display of the operating pressure difference • 2-button menu operation • Two-position controller, time functions, operating and service -production line operating hour counter • Control outputs



**FILTER CONTROL**

**Application:** For differential pressure monitoring of mechanical filters with fan

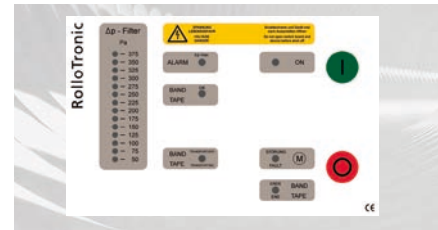
**Application:**  
Compact separator

**Series:** MechaTronic

Measuring range 0 – 1,000 Pa

### Product details

- Control LEDs for OPERATION/SERVICE/ FAULT • Digital display of the operating pressure difference • Differential pressure switch point and connection for mains supply of the fan adjustable • Fan monitoring • Control outputs



**ROLL-BAND FILTER CONTROL**

**Application:** Filter control for band air filters

**Application:**  
Roll-band filter

**Series:** RolloTronic

Measuring range 0 – 1,000 Pa

### Product details

- Automatic band feed • Monitoring of up to 4 band limit switches • Motor control (direct start up) for max. 4 geared motors • Fan monitoring (optional) • Manual band feed possible • Control outputs



**PULSE FILTER CONTROLS**

**Application:** Filter control for jet filter with/without fan

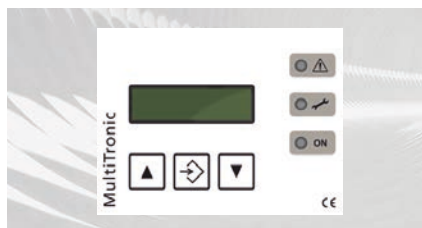
**Application:**  
Cartridge, cassette and hose filters

**Series:** PulsaTronic

Measuring range 0 – 1,000 Pa

### Product details

- Differential pressure monitoring • Differential pressure switch points • Optional control of motor and discharge organs • Adjustable down-time cleaning • Digital recording of operating hours • Control outputs



**FILTER CONTROL**

**Application:** Filter control for mechanical and electrostatic filters with/without fan

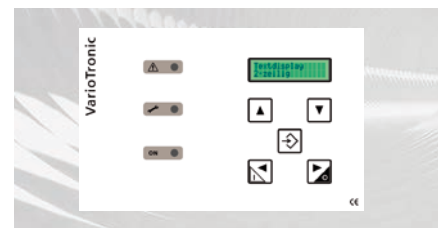
**Application:**  
Compact separator, compact electrostatic filter

**Series:** MultiTronic, patented

Measuring range 0 – 1,000 Pa

### Product details

- Comprehensive control unit • Automatic adaptation of the optimal high voltage (electrostatic filter) • Fan control • Display of the operating pressure difference • Digital text display of all operating parameters • Control outputs



**ELECTROSTATIC FILTER CONTROL**

**Application:** Filter control for large electrostatic filter with/without fan

**Application:**  
Electrostatic precipitator

**Series:** VarioTronic

Control of the washer as well as differential pressure monitoring of a pre-filter optional measuring range of 0 – 1.000 Pa

### Product details

- Monitoring and controlling of the plant components • Automatic adaptation of the optimal high voltage • Digital text display of all operating parameters • Monitoring of the HV-modules • Control outputs

# ***Always at your Service***

---

### **Economical right from the start**

The developments from DELBAG® represent state-of-the-art technology. Our systems support diverse applications that optimally conform to current criteria of cost effectiveness, safety, and sustainability.

Our products and services go far beyond pure technology. They are integrated into a comprehensive and in every respect customized service package.

This program includes not only conventional services such as spare part delivery, maintenance, and repair. It unites the consulting and engineering of a technology leader with customized after-sales service and rapid response times.

And this applies not only to installing new equipment. This service also applies for upgrading and optimizing old equipment, and provides you with perfect support in all project phases. The functionality of the system is secured over its entire service life.

### **International service und support in experienced hands**

Wherever you need us, we will be there for you. All services are designed for absolute safety and reliability. On request, for example, a function check of all DELBAG® components can be carried out by our service staff on location. This way we directly and personally pass on our functional know-how built up over many years. In this context, we should also mention the training sessions which we offer for our filtration solutions. Such training is a beneficial instrument for ensuring the lasting functionality and availability of the systems.

### **A decision for quality**

A high quality standard is the basis and principle of all our services. All our service specialists are highly experienced and devote themselves to their work with great diligence. Technically and personally convincing: this is what you can expect from us.



### **Our services at a glance**

- Own filter and unit production
- Use of certified products and components
- Factory trial run
- Assembly services
- Commissioning of new facilities
- Maintenance and servicing
- Maintenance Contracts
- Short delivery times for spare parts
- Renovation and optimization of old systems
- Advisory
- Training

***DELBAG® Air Filtration is a dynamic globally active company  
within air treatment - filter technology - air quality.***

Our local consultant and service teams gladly take their time to develop ideas and solutions together with our clients – creatively and professionally.

