



# MINING, OIL, AND GAS

## APPLICATIONS



## MATS FOR PROFESSIONAL USE



Notrax® is one of the world's largest integrated manufacturers of dust control and industrial floor mats for professional use. Our commitment is to make quality products and to continue looking for innovative ways of serving our customers. Notrax® mats are manufactured for industrial and commercial environments and are subject to rigorous testing for safety, quality and durability according to American and European quality norms and standards. Notrax® provides innovative matting solutions for ergonomics, slip prevention, cleaning and hygiene, ESD, health and safety for manufacturing, janitorial, food service, production, logistics, education, health care, events and entertainment, and many more industries.

## GROUND PROTECTION



Ground protection mats are a critical safety solution in the oil & gas, transmission, and landscaping industries. TuffTrak® mats are manufactured from composite material, giving them longer lifespans than wood options. Featuring both heavy duty mats capable of supporting cranes and other heavy equipment, as well as light duty access mats for trucks and construction equipment, the TuffTrak® line is diverse enough to provide a ground protection solution for any application. Don't let swampy or rugged terrain derail projects; TuffTrak® mats keep both vehicles and people moving with traction patterns designed to maximize grip and safety.

## MOTION SAFETY



The Monster brand deals with safety products for "motion related" activities, such as vehicular and pedestrian traffic safety. Monster encompasses a wide variety of products, including wheel chocks, warning whips, barricade lights, industrial beacons and strobes, parking lot safety solutions, vehicle identification signs, and composite cribbing. These products are manufactured with high quality materials and sound methods, which has allowed Checkers to create the most durable safety solutions in the industry. Monster Chocks are known worldwide, and are a staple of every mine site. As the strongest and lightest chock on the market, the Monster Chock makes correct position easy, keeping both people and vehicles safe. Monster whips and signals are long lasting and extremely bright, ensuring visibility and safety. Monster Parking Lot Safety Solutions, including parking curbs, speed bumps, and speed humps, are designed with premium durable rubber which allows these products to outlast and outperform the competition.

## CABLE PROTECTION



The Linebacker® brand is focused on cable management systems, cable ramps, and hose bridges. Cable management systems are used in a multitude of industries to prevent damage to cables and hoses as well as to protect pedestrians and vehicles from being exposed to the cables. Linebacker® cable protectors feature a durable polyurethane construction that is simultaneously stronger and lighter weight than similar rubber or metal products. This portability makes setting up Linebacker® cable protectors simple and easy, while the durability gives the products a much longer life span. Linebacker® offers solutions for a variety of applications, ranging from heavy duty mining to indoor office applications. While many models feature hinged lids, drop over, open top, and low profile models are also available, ensuring that Linebacker® has a solution for every type of cable and application.



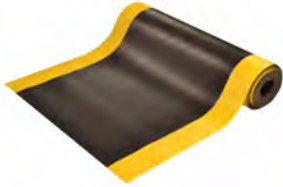
# MINING, OIL & GAS APPLICATIONS



MATS FOR PROFESSIONAL USE

## MATS FOR PROFESSIONAL USE

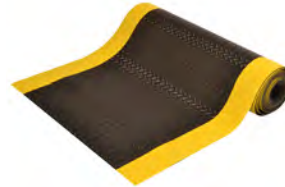
Notrax® Mats for Professional Use offers a range of ergonomic, entrance, anti-fatigue, and safety mats for industrial, commercial and food service environments. Notrax® is recognized as one of the largest integrated manufacturers of floor matting products in the world.



### SWITCHBOARD MATTING

Model # 830

- Electrically Insulative Type 2 PVC compound
- Each square foot of this matting is tested in conformance with ANSI/ASTM D-178 specifications
- ⚠ **WARNING:** Below



### DIAMOND SWITCHBOARD MATTING

Model # 831

- Non-conductive matting made from a PVC compound
- Diamond-plate surface for traction
- Recommended maximum use voltage: 17,000
- ⚠ **WARNING:** Below



### KNEE RX

Model # 950

- Designed for comfort and durability while kneeling
- For use on gravel, asphalt, concrete, dirty/oily surfaces, tile & wood flooring, metal grating, grass
- ⚠ **WARNING:** Below



### ENTRANCE MATTING

Model # 130

- 19 ounces of tufted cut-pile Decalon® per square yard
- Overall thickness of 5/16 inch to fit in narrow clearance doorways
- Vinyl backing helps reduce mat movement



⚠ **WARNING:** This product can expose you to chemicals including, di (2-ethylhexyl) phthalate or diisononyl phthalate, which are known to the State of California to cause cancer and birth defects or other reproductive harm. For more information go to [www.P65Warnings.ca.gov](http://www.P65Warnings.ca.gov).

## GROUND PROTECTION

Whether you need to protect sensitive turf, or provide extra traction, TuffTrak® ground protection solutions have you covered. TuffTrak® mats can be connected together to form roadways or walkways, and with a wide variety of traction patterns, weights, and designs, they are applicable to nearly every industry.

### TUFFTRAK XL

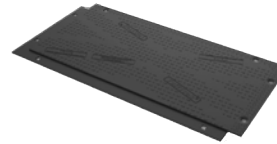
Model # TTXL



- Composite mat for heavy equipment, machinery, and multiple vehicles
- Solid one piece construction
- Creates tough durable working areas and temporary roads
- ⚠ **WARNING:** Below

### TUFFTRAK XL+

Model # TTXL+



- Unique chevron traction® surface nub design for maximum grip
- Unique Four3 cam lock connector / fixing pin
- Reversible surface
- ⚠ **WARNING:** Below

### TERRAROAD

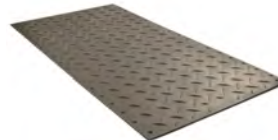
Model # TR1



- Buoyancy capability
- Lightweight, but high strength
- Overlapped, unique integrated cam design
- Profiled underside to reduce weight
- ⚠ **WARNING:** Below

### ALTURNAMATS

Model # AM48



- Bolt cleat design for great traction
- mats can be locked together with Turn-A-Links forming a continuous roadway
- Leave turf smooth, even in soft conditions
- ⚠ **WARNING:** Below

### TRAKMATS

Model # TM4496



- Tough, flexible half-inch-thick sheet
- Trakmats® will bend but will not break
- UV protection prevents material degradation
- ⚠ **WARNING:** Below

### OUTRIGGER PADS

Model # PAD24241



- No splinters, warping, or delamination
- Lightweight & heavy duty
- Recovery memory after bending
- Engineered to bend but not break



⚠ **WARNING:** This product can expose you to chemicals including Lead, Carbon Black, Chromium, Nickel Compounds, and Sulfur Dioxide, which are known to the State of California to cause cancer and birth defects or other reproductive harm. For more information go to [www.P65Warnings.ca.gov](http://www.P65Warnings.ca.gov).



### WARNING WHIPS

Monster warning whips are designed to increase the visibility of vehicles. Without a whip for extra visibility, large equipment operators can have difficulty seeing these smaller vehicles, potentially leading to accidents. Both lighted and non-lighted models are available, with many different mounting options.



#### LIGHTED WARNING WHIPS

Model # AP8.12OY.AF4

- Extensive lighting options, with a variety of flash pattern options
- Fiberglass resin construction withstands harsh environments
- Waterproof LED housing to improve longevity

**⚠ WARNING:** This product can expose you to chemicals including Nickel Compounds, which is known to the State of California to cause cancer and birth defects or other reproductive harm. For more information go to [www.P65Warnings.ca.gov](http://www.P65Warnings.ca.gov).



#### SUPER WHIPS HEAVY DUTY LIGHTED WHIPS

Model # SW12

- Includes heavy duty spring mount
- DAY BRIGHT<sup>TM</sup> Florescent orange nylon mesh flag with yellow 3M<sup>®</sup> Scotchlite<sup>®</sup> reflective X

**⚠ WARNING:** This product can expose you to chemicals including Nickel Compounds, which is known to the State of California to cause cancer and birth defects or other reproductive harm. For more information go to [www.P65Warnings.ca.gov](http://www.P65Warnings.ca.gov).

### INDUSTRIAL SIGNALS

Monster Motion Safety<sup>TM</sup> Brand signals produce more light output than competing products to create safer work environments. Using innovative technology and the highest quality materials, our high-visibility Barricade Lights, Beacons, and Vehicle ID Lights provide superior performance. Designed to withstand the harshest conditions on mine sites.



#### INDUSTRIAL BEACONS

Model # SL.2250.LMA

- Integrated heat sink allows LEDs to be driven at higher intensities without sacrificing performance
- Can be used as a steady burn, non-flashing beacon
- 10 changeable flash patterns
- **⚠ WARNING:** Below



#### STROBE LIGHTS

Model # SL.310.LS

- Durable materials used to withstand harsh weather and working conditions
- Combination Mount reduces inventory requirements
- **⚠ WARNING:** Below



#### LED WORK LIGHTS

Model # LWL.3.W

- Cast aluminum housing
- 5 Programmable flash patterns
- Overall Size: 5.3"L X 2"W X 1.5"H
- Operates from 12 to 24 volts
- **⚠ WARNING:** Below



#### BARRICADE LIGHTS

Model # BR3.AC.D3

- 30% more light output than competing brands
- Built with heavy duty, UV-stabilized polycarbonate and polypropylene
- Available in both electrical and solar powered models
- **⚠ WARNING:** Below



#### SMALL ID SIGNS

Model # LUN-SV

- Perfect solution for identifying multiple vehicles
- Minimizes replacement and maintenance costs
- Numbering can be viewed when vehicle is not powered
- **⚠ WARNING:** Below



#### LARGE ID SIGNS

Model # LUN30X12

- Optimum visibility during the day or night even when not powered
- Withstands high pressure washing, impact, vibration, and big temperature shifts
- **⚠ WARNING:** Below

**⚠ WARNING:** This product can expose you to chemicals including Isopropylidenediphenol, Methylene Chloride, Ethanol, Ethylbenzene, Hexane, Lead, Methanol, Nickel Compounds, and Naphthalene, which are known to the State of California to cause cancer and birth defects or other reproductive harm. For more information go to [www.P65Warnings.ca.gov](http://www.P65Warnings.ca.gov).

## WHEEL CHOCKS

Checkers manufactures the world's most extensive line of wheel chocks. Monster wheel chocks comply with the safety requirements for a variety of industries and ensure a safe working environment while your vehicles are at rest. Made with durable urethane, Monster wheel chocks provide a safe chocking solution for any type of vehicle.



### MINING CHOCKS

Model # MC3000

- Light weight with tough urethane construction
- Optional studs available for snow and ice
- Chocking protocols imprinted on back of chock

**WARNING:** This product can expose you to chemicals including Carbon Black, which is known to the State of California to cause cancer and birth defects or other reproductive harm. For more information go to [www.P65Warnings.ca.gov](http://www.P65Warnings.ca.gov).



### HEAVY DUTY CHOCK

Model # MC3011

- Durable, lightweight, and easy-to-use design
- Ideal for: Heavy Equipment, Haul Trucks, Cranes, Large Military Tactical Vehicles

**WARNING:** This product can expose you to chemicals including Carbon Black, which is known to the State of California to cause cancer and birth defects or other reproductive harm. For more information go to [www.P65Warnings.ca.gov](http://www.P65Warnings.ca.gov).



### ALL-TERRAIN CHOCKS

Model # AT3512

- Light weight with tough urethane construction
- Chocking instructions imprinted on back of chock
- Complies with SAE-J348, NFPA 1901, and NFPA 1906 Standards

**WARNING:** This product can expose you to chemicals including Carbon Black, which is known to the State of California to cause cancer and birth defects or other reproductive harm. For more information go to [www.P65Warnings.ca.gov](http://www.P65Warnings.ca.gov).



### GENERAL PURPOSE CHOCK

Model # UC1500

- UC Series - designed for a wide variety of commercial applications
- Lightweight urethane construction
- Ideal for Over-the-Road Trucks, Trailers, Pickups, Utility Vehicles

**WARNING:** This product can expose you to chemicals including Acrylonitrile and Styrene, which are known to the State of California to cause cancer and birth defects or other reproductive harm. For more information go to [www.P65Warnings.ca.gov](http://www.P65Warnings.ca.gov).



# MINING, OIL & GAS APPLICATIONS

**LINEBACKER®**  
CABLE MANAGEMENT

## CABLE & HOSE PROTECTION

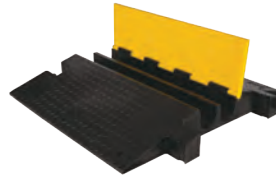
Linebacker® offers the most extensive line of high performance cable protection products in the world. These durable systems protect valuable electrical cables, cords and hose lines from damage while providing a method of safe passage for pedestrian traffic, vehicles and heavy duty equipment.



### EXTREME CROSSOVER SYSTEM

Model # X039-3-2-L10

- Protects cables and hoses up to 5.5" outside diameter
- Withstands over a million pounds GOVW
- Impact and abrasion resistant
- ⚠ **WARNING:** Below



### YELLOW JACKET EXTREME CROSSOVER

Model # YJ2-400

- Protects cables and hoses up to 3.75" outside dia.
- Easily handles the load of a 400-ton haul truck
- ⚠ **WARNING:** Below



### SUPER HOSE BRIDGE

Model # CHHB568

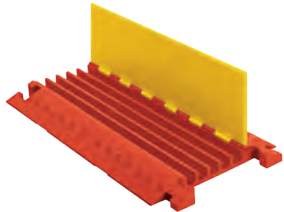
- Protects hoses up to 10" in diameter
- 14,000 lbs. per axle load capacity
- Includes 3 male connections and 3 female connections
- ⚠ **WARNING:** Below



### DIAMONDBACK HOSE BRIDGE

Model # UHB4045

- Protects hoses up to 6.5 in.
- Reduces hose maintenance costs
- Ideal for: Mining, Refineries, Industrial, Firefighting Vehicles
- ⚠ **WARNING:** Below



### HEAVY DUTY CP SERIES

Model # CP5X125

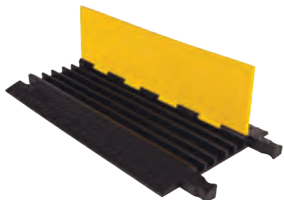
- Uses T-Connector
- Checkers' most robust cable protection option
- High load-bearing capacity
- Ideal for: Mining, Oil & Gas, Military, Industrial Applications
- ⚠ **WARNING:** Below



### UTILITY CROSSOVER SYSTEM

Model # COP2200-4.5

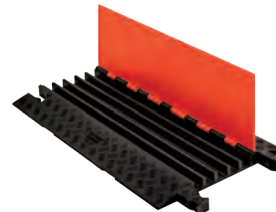
- Polyurethane construction
- Lightweight and portable
- Load capacity up to 4,000 lb./tire
- 4.5 inch tunnel size
- ⚠ **WARNING:** Below



### YELLOW JACKET SERIES

Model # YJ5-125

- Dog Bone Connector
- The "original" cable protector for over 30 years
- For heavy volume traffic areas
- Ideal for: Mining, Manufacturing, Material Handling, Construction
- ⚠ **WARNING:** Below



### GUARD DOG SERIES

Model # GD5X125

- Checkers' most versatile option
- For pedestrian traffic and over-the-road vehicles
- Ideal for: Utility, Industrial, Entertainment
- ⚠ **WARNING:** Below

⚠ **WARNING:** This product can expose you to chemicals including Carbon Black, Titanium Dioxide, Formaldehyde, and Benzyl Butyl Phthalate, which are known to the State of California to cause cancer and birth defects or other reproductive harm. For more information go to [www.P65Warnings.ca.gov](http://www.P65Warnings.ca.gov).





## CHECKERS SAFETY GROUP®

620 Compton St  
Broomfield, CO 80020

PHONE: (800) 438-9336

FAX: (720) 890-4858

EMAIL: [sales@checkers-safety.com](mailto:sales@checkers-safety.com)

[www.checkers-safety.com](http://www.checkers-safety.com)

Ver: 8/18  
MKTS070435

A PRODUCT OF:



For more information visit: [www.checkers-safety.com](http://www.checkers-safety.com)

Checkers Safety Group is committed to providing revolutionary product designs and visionary safety solutions that protect people, assets, and the environment.

CHECKERS' FAMILY OF BRANDS:

**TRAX**  
MATS FOR PROFESSIONAL USE

**TuffTrak**  
Ground Protection Solutions

**MONSTER**  
MOTION SAFETY

**LINEBACKER**  
CABLE MANAGEMENT