

Electric • Control • Mechanic

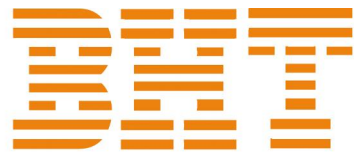
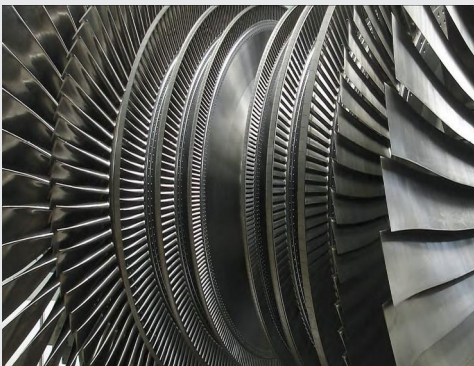
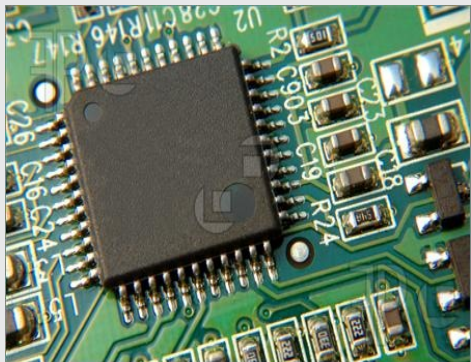
BHT Electric Control Mechanic GmbH & Co. KG

www.BHT-Online.de

Germany

BHT Electric Control Mechanic GmbH & Co.KG
Habsburgerring 1
50674 Koeln / Germany

Tel: +49 (0) 221 1685 7907
Fax: +49 (0) 221 1685 6379
E-Mail: BHT@BHT-Online.de
Web: www.BHT-online.de

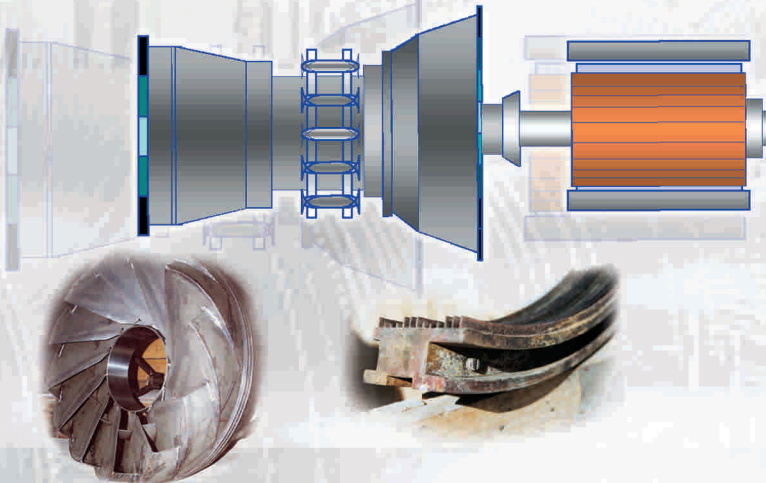


Electric • Control • Mechanic

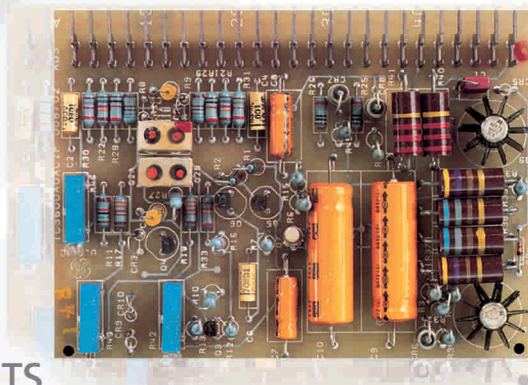
BHT Electric Control Mechanic GmbH & Co. KG

www.BHT-Online.de

**TURBINE
MECHANICAL COMPONENTS**



**ELECTRICAL
COMPONENTS**



AUTOMATION

DATA



**ENGINEERING
PRODUCTION
REPAIRS
SERVICE
SALES**



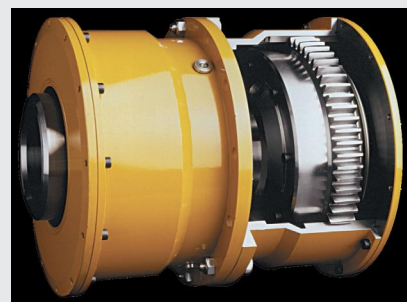
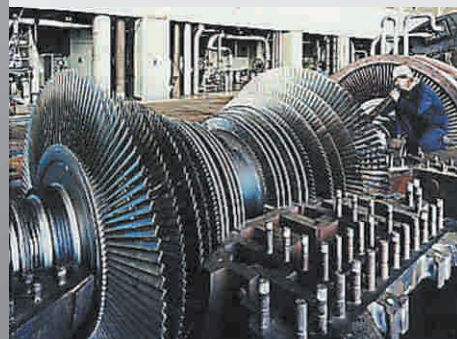
MACHINERY

- GT13, GT9
- FRAME 9, 7, 6, 5
- MS 5001-1, 50002AB, MS 3000-1, 30002HJ
- V64.3, V84.2, V94.2, V64.3A, V84.3A, V94.3A

and BBC/ ABB, ALSTOM, MITSUBISHI, MAN, Rolls-Royce, Ansaldo Siemens, BHARAT, HITACHI.

Scope of supplies

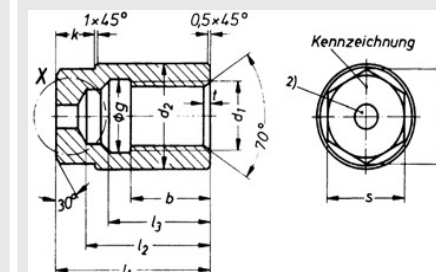
- Hot Gas-, Generator-Parts, Gear Box- & Miscellaneous Parts
- Electrical Components
- Datalogging-Transfer Visualisation Net-Dispatching-Remote Control Components
- Automation, Conversion- and Modernisation of Control Systems; e.g.
- Retrofit of Mark I & II with Controls based on Modern General Components and Upgrade of Mark IV & V with TMOS



ENGINEERING, PRODUCTION, REPAIRS SERVICE & SALES

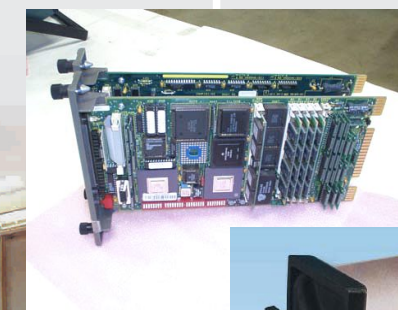
Products for Power, Cement, Railway, Mining, Gas & Oil Industries (Electrical, Mechanical & Instruments)

Instrumentation (Mechanical or Electrical), Circuit boards (Analog & Digital) Controlling systems, Data loggers, Valves, Pumps, Motors, Compressors, Spare parts for HP & LP Bypass valves & Actuators, Couplings & Gears, Hydraulic and Pneumatic components, Pipes & Wires, Metal sheets & raw materials Spare parts for Boilers/Heat Exchangers (Fin tubes & Preheater baskets), heat shields, Flame scanner, Segments & Hot parts, locking blades, Bolts, Nuts & springs, Expansion screws, Retaining rings, Insulation Materials, Filters Gaskets & Sealings, Refractory bricks and holders, Electrolyzers, Solar panels & components, Solar water heating systems, and generally all spare parts for Gas, steam & wind Turbines.

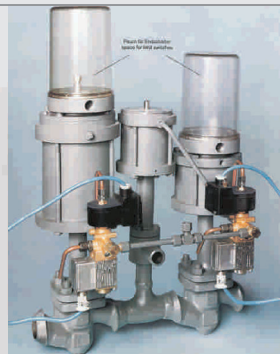
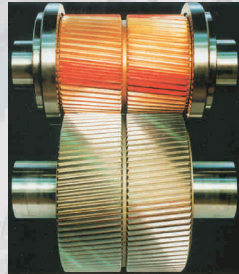


MAIN SERVICES:

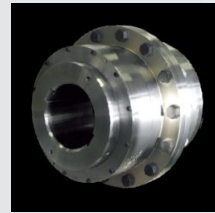
- Reverse Engineering of old / obsolete parts (Mechanical parts & Electronic boards)
- Re-engineering, engineering, manufacturing, design.
- Procurement of spare parts & machineries, import & export.



MISCELLANEOUS COMPONENTS

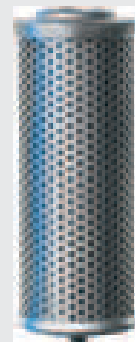


- Coupling & Clutches (any range)
- Gear Box & Parts
- Journal + Thrust Bearings, Shaft Bearings,
- Quill Shafts, Main Shafts, Clutch Jaws,
- Main Pump, Gears and Bushings
- Generator Parts
- Non-Magnetic Retaining ring
- Bushes
- Collector Rings
- Thermocouples, Relays, Limit Switches,
- Proximity Switches, Temperature Switches



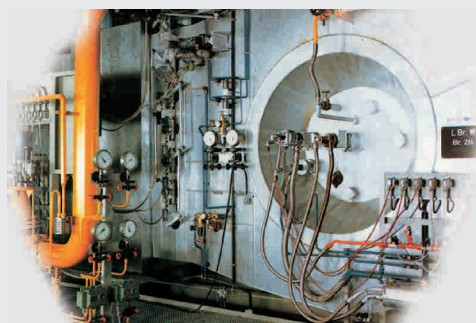
- Equivalent Electronic Boards for Control Systems

- Vibration Detectors, Flame Detectors, Spark Plugs and Leads



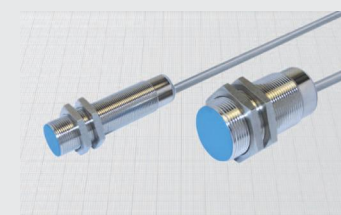
- Installation Materials

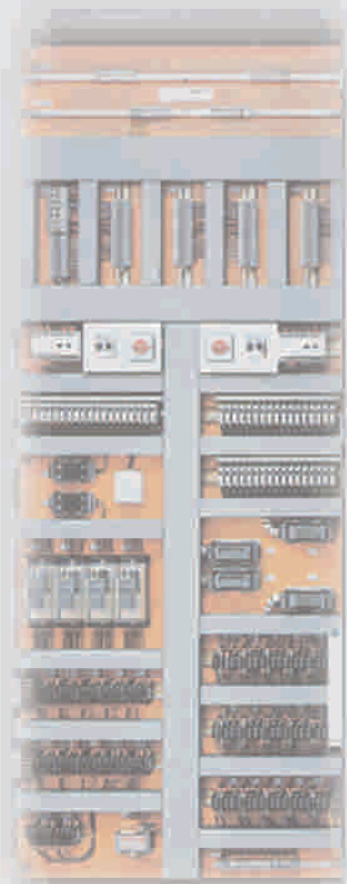
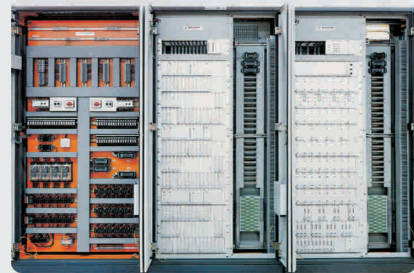
- Filters, Air, Oil, Fuel
- Bolts, Nuts, Standard Hardware
- Gaskets, Packings
- Valves



ELECTRICAL COMPONENTS

- Electricity Supply, Power Supply Units
- Switches, Gas Isolated Switches,
- Busbar-Systems, Meters, Switch Boards
- Transformers, Transducers
- Condensers, Filters (water, oil etc.)
- Actuators, Sensors, Detectors, Breakers,
- Circuits, Analog & Digital boards
- Coils
- Vibration Pick-Ups
- Control Cards, System Controls
- Relays, Timers, Amplifiers
- Semi-Conductors (any type)
- Solenoid Valves
- Controllers, Diff. Pressure Indicators
- Pressostates
- Dataloggers, Transmitters
- Thermocouples (any Type)
- Thermometers, Dial Thermometers, Needle Thermometer
- Potentiometers
- Sensors (Temp. Vibration, Speed etc.)
- Cable Sets, Junction Boxes, Installation
- Raw Materials (Alloys & Chemicals)
- Fuses (HV & LV)





AUTOMATION / DATA COMPONENTS

Controllers

PLC / NC / RC
VME,
PC-Workstations

Drives

AC Drive
DC Drive

Decentralize I/O

Binary I/O
Analog I/O
Regulators
Timer
Counter
Ident-Systems

Valves

Pneumatic Valves
Magnetic Valves

Tools

Configuration
Bus Monitor
Engineering

Repeater

Fiber
Optics
Cables

Instruments

Level
Flow
Pressure
Temperature

Gateways

AS-Interface
proprietary networks

Hos Interfaces

VAX Computers
VME Computers

Software Drivers

DOS/Windows/NT/95
OS9/VRTX
VxWorks/PSOS+
OS2, QNX
UNIX/VMS

Services

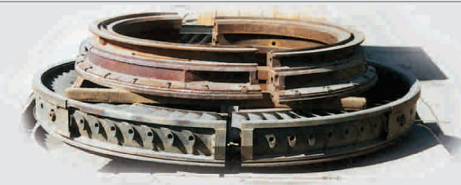
Development Support
Implementation Support
Training

HMI

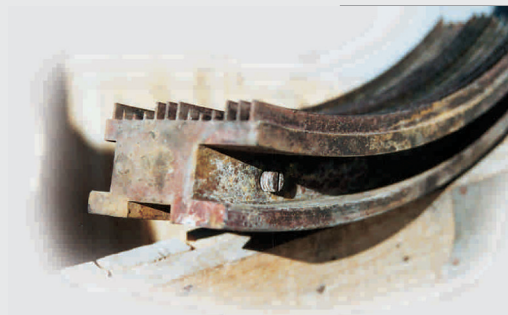
Operator Panels
Text Displays



MECHANICAL COMPONENTS



- Nozzles + Buckets, all Stages
- Rotor + Stator Blades, all Stages
- Shrouds, all Stages
- Associated Hardware to install above parts
- Hot parts (Gas turbine segments, holders etc.)
- Burners, Combustion Chambers, Fixings, Bricks,
- Transition Pieces, Combustion Liners,
- Crossfire Tubes and Crossfire Tube Retainers
- Fuel Nozzles - All Types



- Journal + Thrust Bearings
- Oil Seal and Deflectors, Packing Rings, Flex Seals
- Load Couplings, Accessory Gear Couplings
- Change Outs for above Hardware
- Fuel Pumps and Dividers, Oilgear fuel Pumps
- Atomizing Air Compressors, Booster Atomizing Air
- Compressors, Fuel Flow Check-Valves

