



Connected Solutions

Remote Power
System Management

GENOSYS™

Nidec
All for dreams

LEROY-SOMER
KATO ENGINEERING



Monitor And Manage Your Power System Fleet Remotely With GenOSys™ – A Unified Cloud Based Architecture

THE CHALLENGE

Power system fleet managers need accurate, timely information about the performance of their systems to improve safety, efficiency and cost containment.

THE SOLUTION

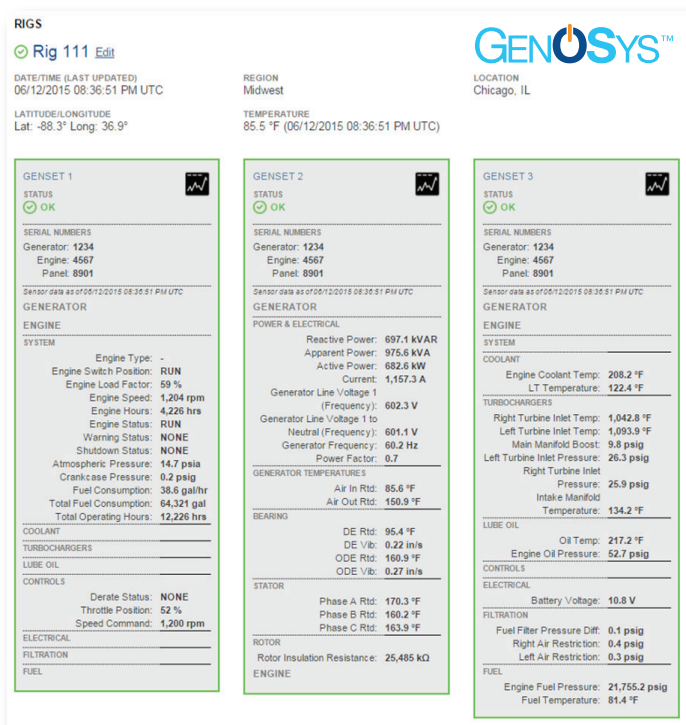
GenOSys is an advanced, flexible asset management tool that monitors, tracks and alerts end users with key data regarding power system performance for both retrofit and new builds.

The GenOSys system includes on-site electronics and hardware, secured local and remote processing, and a customizable secured web interface.

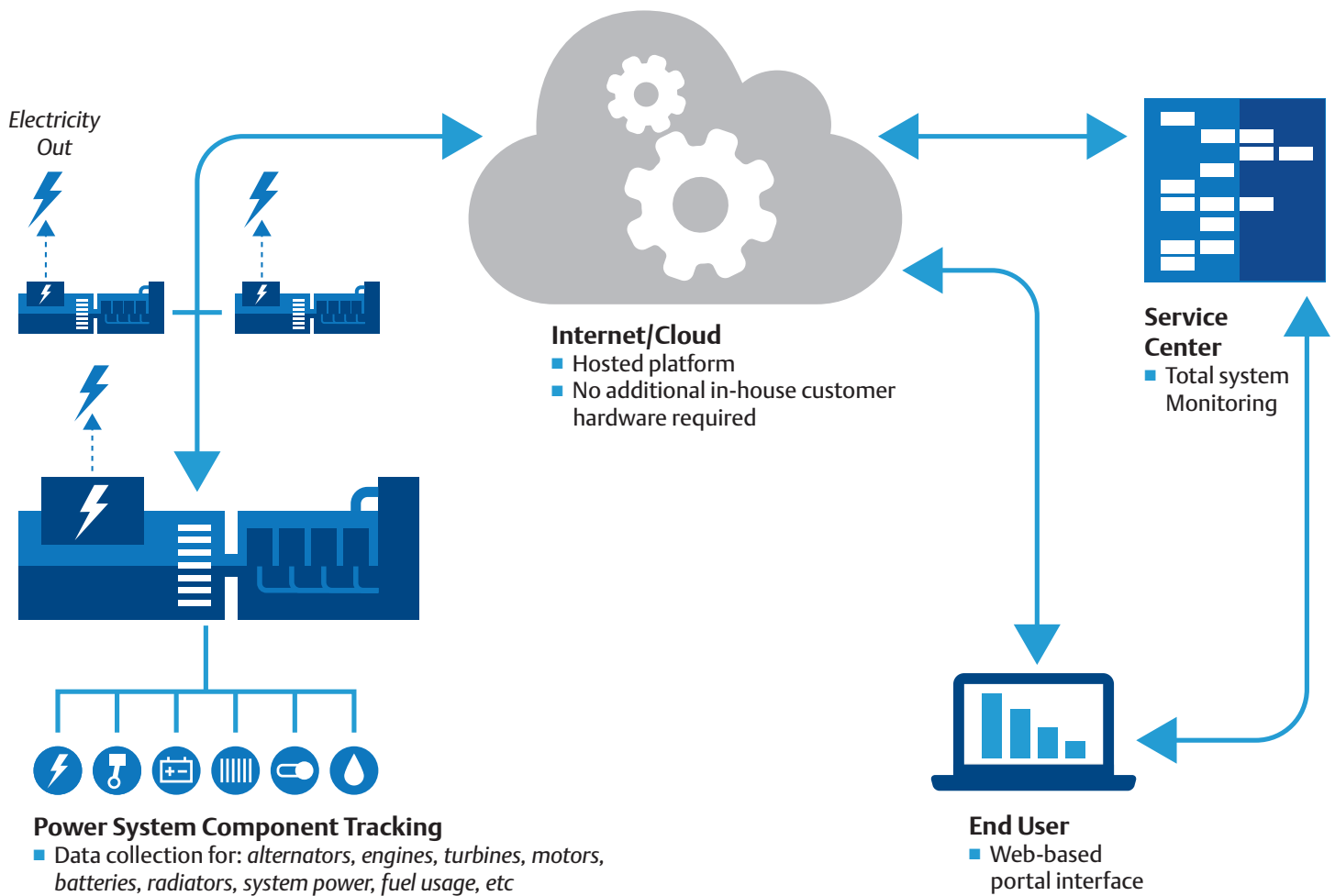
With real-time operating asset data available remotely, safety is improved and performance can be optimized. The opportunities to improve power system quality are endless.

BENEFITS OF GENOSYS

- Reliable, real-time power system information, even from remote locations
- Optimal power quality
- Improved operating asset and site efficiency
- Extended equipment life before need for rebuild
- Reduced likelihood of catastrophic asset failure and premature replacement costs
- Improved workforce safety
- Enhanced ease of use
- Centralized fleet management
- Streamline maintenance and service organizations
- Eliminate unnecessary preventative and predictive maintenance
- Control field repair quality



GenOSys web interface



GenOSys™ Overview

Collect a full range of data from multiple components and/or systems on-site

- Monitor what you need, i.e. vibrations, rotor insulation health, system fault conditions, pressures, speeds, etc.
- Proprietary Application Programming Interfaces ensure easy integration into other systems
- Flexible outbound communications capabilities

Cloud-based data management with state-of-the-art technologies

- Optimized response with local and remote data processing
- Ensured data redundancy and availability when needed
- Industry-leading security
- Detailed analyses from electrical equipment OEM

View and respond to diagnostics and performance data in real-time

- View and manage multiple remote sites from anywhere in the world
- Intuitive web portal with a full compliment of data, trending and logging at your fingertips
- Predictive alerting from system experts

Optimize Your Power System Performance with GenOSys

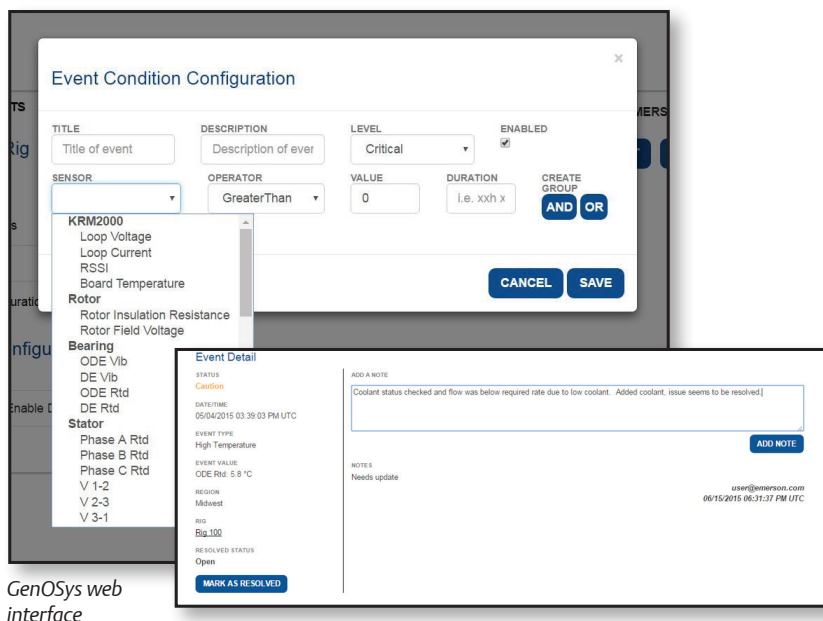
APPLICATIONS

Any critical power in prime or continuous applications requiring high-speed information.



WHY

Protect your investments and get the most out of your critical power systems with monitoring and diagnostics from the experts.



GenOSys web interface

About Us

GLOBAL REPUTATION FOR EXCELLENCE

Kato Engineering and Leroy Somer bring a long history and global reputation for designing and manufacturing the world's leading generators known for ruggedness and performance. Now, GenOSys enables you to optimize your power generation facilities with continuous remote monitoring and diagnostics.

WORLD-CLASS CUSTOMER SERVICE & SUPPORT

- Service contracts available with GenOSys for certified alternator maintenance and health management
- Skilled specialists are only a phone call away
- Available to assist customers 24/7 every day of the year
- Equipment installation, commissioning, start-up and maintenance
- Troubleshooting & repairs
- Genuine aftermarket parts

KATO ENGINEERING™

Electric Power Generation
2075 Howard Drive West
North Mankato, MN 56003, USA
Tel. +1 507-625-4011

LEROY-SOMER™

Boulevard Marcellin Leroy,
CS 10015 - 16915 Angoulême
Cedex 9 - France
Tel. +33 238 609 908

genosys@leroy-somer.com



©2017. GenOSys is a trademark of Kato Engineering/Leroy Somer. The information contained in this brochure is for guidance only and does not form part of any contract. Kato Engineering/Leroy Somer reserves the right to change product specifications without notice.