

TuffTrak[®]

Ground Protection Solutions

BRAND OVERVIEW

BROCHURE



HEAVY DUTY MATS

Manufactured with various blends of High Molecular Weight Polyethylene (HMWPE) and Ultra High Molecular Weight Polyethylene (UHMWPE), our composite "Big Mats" are tougher and more durable than wood-based competitors. With a modular interlocking design, our mats create safe walkways, roadways and working platforms.

TUFFTRAK XL

Model # TTXL



- Composite mat for heavy equipment, machinery and multiple vehicles
- Solid one piece construction
- Tough durable working areas and temporary roads for heavy equipment

TUFFTRAK XL+

Model # TTXL+



- Unique chevron traction® surface nub design for maximum grip
- Unique Four3 cam lock connector / fixing pin
- Reversible surface
- Overlapping connectors for durability

TUFFTRAK XT

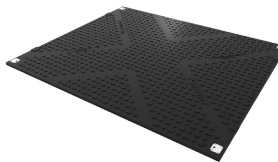
Model # TTXT



- Buoyancy capability
- Unique chevron traction® surface nub design for maximum grip
- Hybrid overlaps for extra strength at connector and corner points

TUFFTRAK STANDARD

Model # TTST



- Solid one piece construction
- Unique chevron traction® surface
- Tough durable working areas and temporary roads for heavy plant, equipment and multiple vehicles
- Supports health & safety objectives
- Lower transport cost than other mats

TERRAROAD

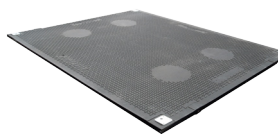
Model # TTR



- Supports up to 75 tonne point load
- Fast and easy to install
- Unique overlap and connection system

TUFFTRAK LITE

Model # TTL



- Designed to provide lighter weight heavy duty access
- Non-conductive - ideal for use on transmission projects
- Substantially lower transport costs than other mats

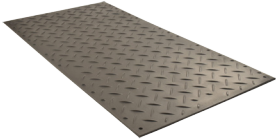


MEDIUM DUTY MATS

These light duty solutions are easily transportable, and ideal for landscaping and utility applications. These versatile mats prevent vehicles from getting stuck in muddy, wet, or unstable conditions. They feature high load capacities and durable design, without sacrificing ease of use.

ALTURNAMAT

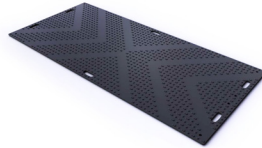
Model # AM48



- Easily supports 120 ton vehicles
- Rugged 1/2 in. thick polyethylene
- Available with either rugged AlturnaTread or low profile VersaTread
- Build a roadway or working platform in minutes
- Available in black, white, or clear

LIBERTYMAT

Model # LIB001



- Fast and easy to install
- Unique chevron traction® surface
- Minimizes property and environmental damage
- Supports health and safety objectives
- Low transportation and handling costs

OUTRIGGER PADS

Outrigger Pads provide a large, super strong footprint to stabilize heavy equipment. Constructed of engineered composite material, our outrigger pads set the standard for high quality, heavy duty support.

OUTRIGGER PADS

Model # PAD2424



- No splinters, warping, or delamination
- Lightweight & heavy duty
- Recovery memory after bending
- Engineered to bend but not break!

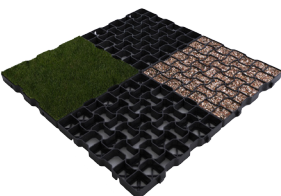


GROUND STABILIZATION

The GeoGrid is a unique product designed for temporary ground stabilization. It is a great product for creating temporary parking areas and roadways.

GEOGRID

Model # GEO001



- Ground reinforcement and stabilization system ideal for pathways and driveways
- Unique design avoiding surface deformation in high temperatures
- Fast and simple to install with simple interlocking design





TUFFTRAK®

620 Compton St.
Broomfield CO 80020

PHONE: (800) 438-9336

FAX: (720) 890-4858

EMAIL: sales@checkers-safety.com

www.tufftrak-safety.com

A PRODUCT OF:



For more information visit: www.checkers-safety.com

Checkers Safety Group is committed to providing revolutionary product designs and visionary safety solutions that protect people, assets, and the environment.

CHECKERS' FAMILY OF BRANDS:

STRAX®
MATS FOR PROFESSIONAL USE

TuffTrak®
Ground Protection Solutions

MONSTER.
MOTION SAFETY

LINEBACKER.
CABLE MANAGEMENT